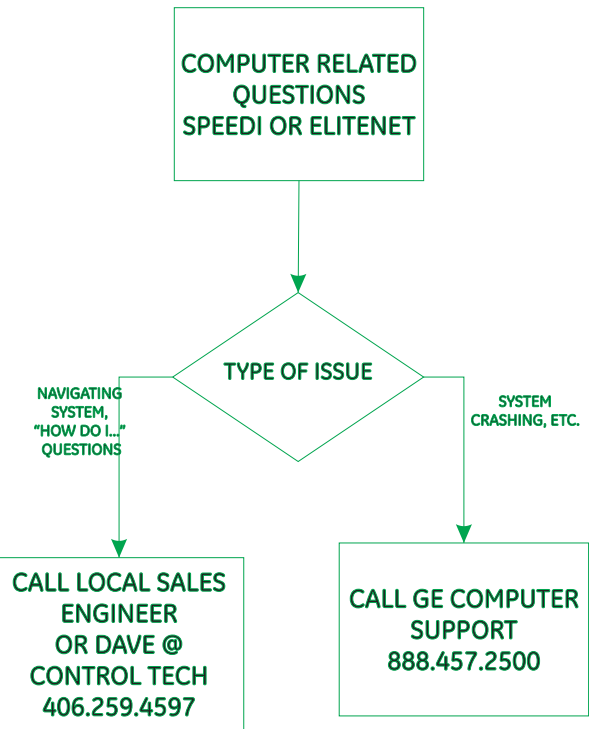
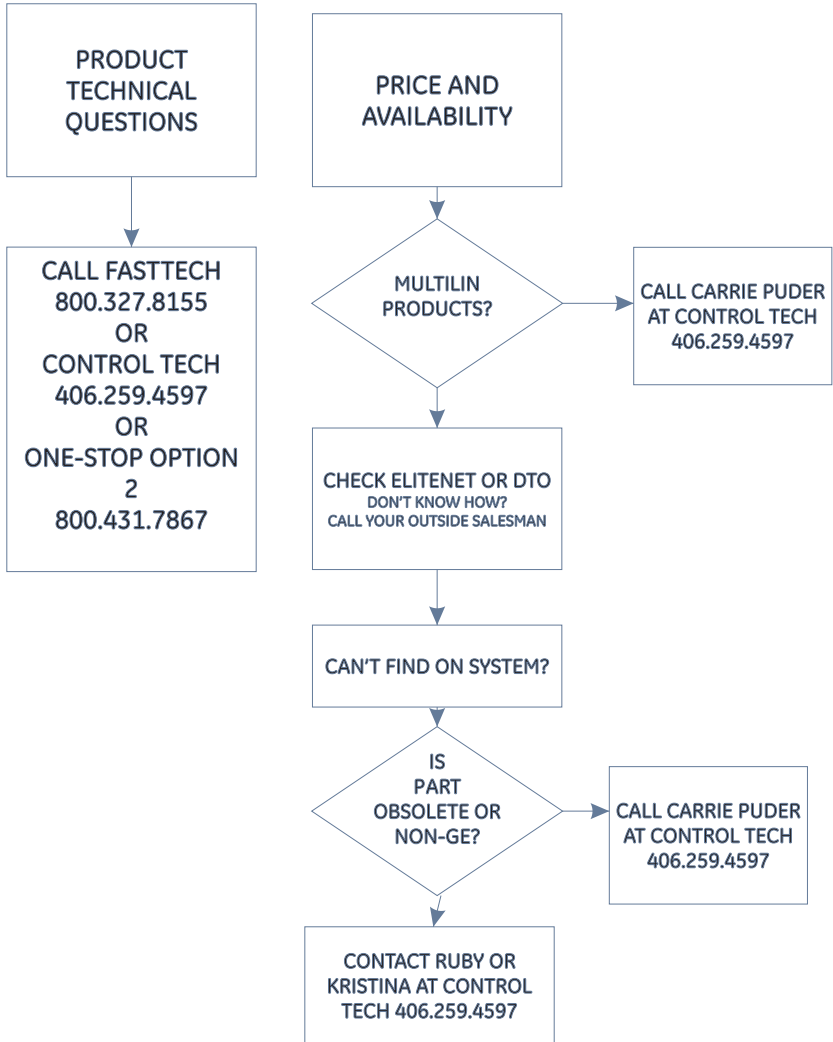


GE SOLUTIONS

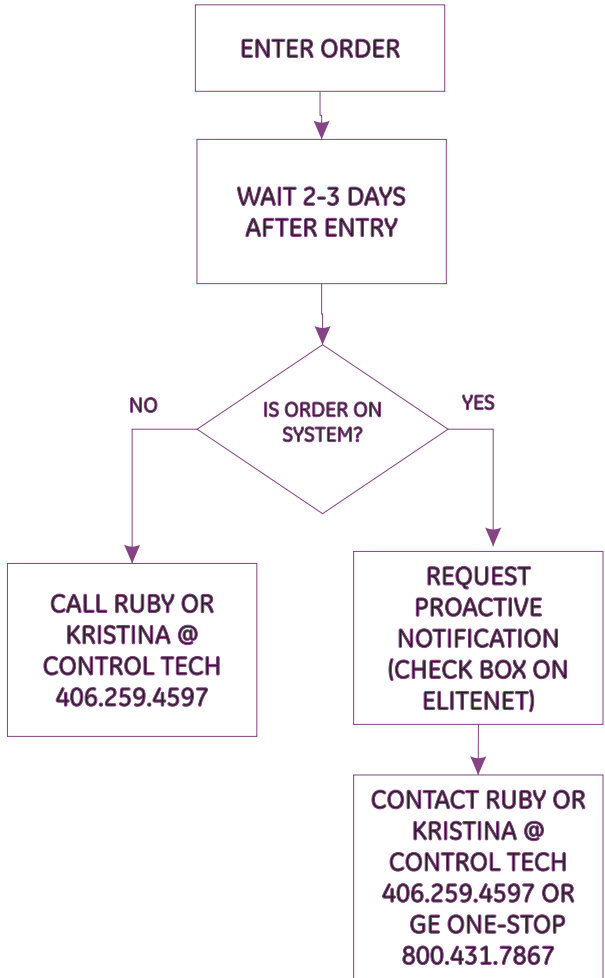
QUOTING A JOB



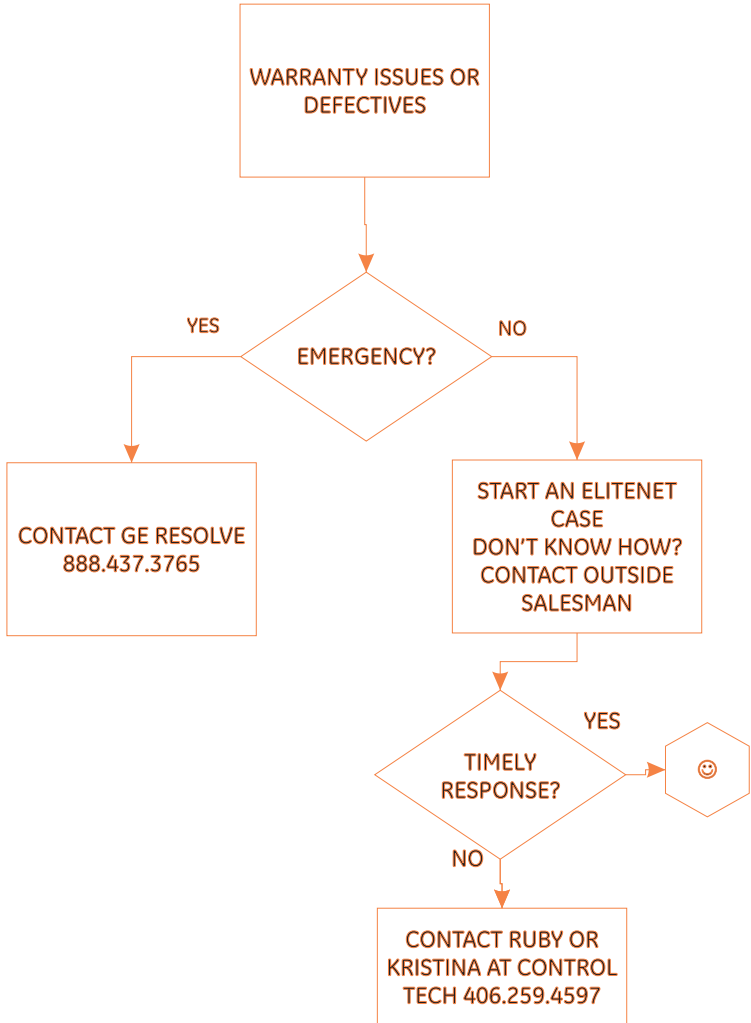
ORDERING A JOB



TRACKING AN ORDER



RESOLVING AN ISSUE A PRODUCT



CONTROL TECHNOLOGY TEAM

406.259.4597
 FAX 406.259.4599
 EMAIL: FIRST NAME.LAST NAME@GE.COM

OWNER
 BILL VANDERLOOS

**SALES & OPERATIONS
 MANAGER**
 RICH HAAG

GE ORDER ENTRY
 RUBY CHUNKAPURA

GE QUOTATIONS TEAM
 DAVE PEDERSON
 KARI ANDREN

**NON-GE & MULTILIN ORDERS/QUOTATIONS
 CLAIMS COORDINATOR**
 CARRIE PUDER

PROJECT MANAGEMENT
 JIM ELDUEN
 KRISTINA CUMBER

INSIDE SALES TEAM MANAGERS
 JIM ELDUEN
 TYLER GANNETT

SHIPPING INFO
 STOCK ORDER CYCLE FROM:
 MASCOT, TN - 5-7 DAYS
 LOS ANGELES, CA - 2-3 DAYS

11:30 AM MST CUTOFF FOR CYCLE SHIP & NEXT DAY ORDERS

CYCLE SHIP DAYS: TUESDAY/FRIDAY

SHIPPING TERMS:
 GROUND >\$1000: FREIGHT ALLOWED
 GROUND <\$1000: \$40 SMALL ORDER HANDLING CHARGE
 AIR NEXT DAY: FREIGHT ONLY (SMALL ORDER CHARGE WAIVED)
 AIR 2ND DAY: FREIGHT + \$40

FANUC & MOTORS/DRIVES
 CARRIE PUDER - FANUC & DRIVES
 TYLER GANNETT - FANUC

GE MULTILIN
 WWW.GEMULTILIN.COM
 CARRIE PUDER

GE COMPUTER SUPPORT
 SPEEDIWIN & ELITENET
 GE HELPDESK
 1.866.457.2500

ON-SITE FIELD SERVICE
24-7
 1.888.434.7378